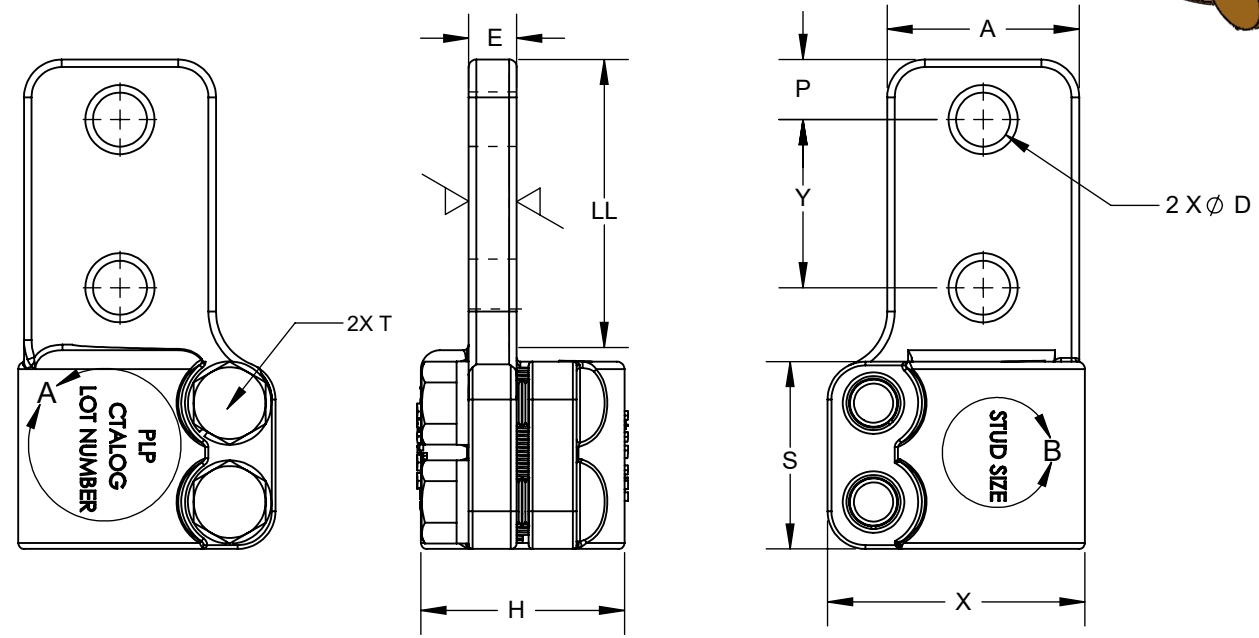
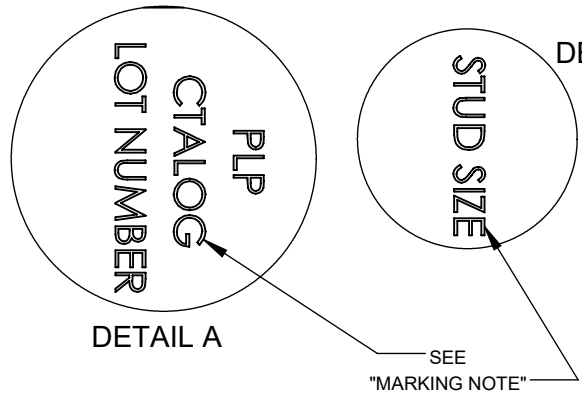
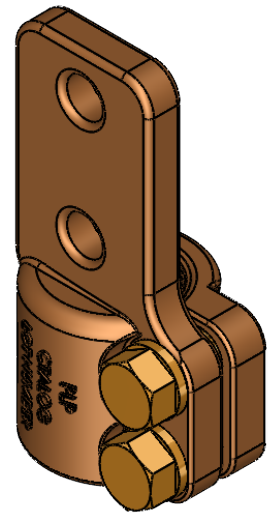


CATALOG	STUD mm [in]	DIMENSIONS mm [in]									WEIGHT KG [Lb]	RECOMMENDED TORQUE Nm [Lb-ft]
		A	E	H	LL	P	S	T	X	Y		
PM57C14-1-2N	25.4 [1.000]	76.2 [3.000]	9.5 [0.375]	48.2 [1.898]	76.2 [3.000]	15.9 [0.625]	40.6 [1.598]	9.5 [3/8]	57.1 [2.248]	44.5 [1.750]	1.307 [2.881]	27 [20]



- MATERIAL: COPPER ALLOY
- HARDWARE: SILICON BRONZE
- FOR TIN-PLATED ADD SUFFIX -E AT THE CATALOG NUMBER
- THE "LL" DIMENSION INDICATES THE MINIMUM LENGTH FOR THE CONTACT SURFACE
- IF CUSTOMER REQUIRES, HARDWARE MAY BE SUPPLIED BY:
 - SS FOR STAINLESS STEEL
- "MARKING NOTE BODY": MARK "PLP AND/OR DELTA"
"CATALOG"
"STUD SIZE"
"LOT NUMBER"

BY OVER RELIEF
 -(THE MARKING NOTES MAY CHANGE OF POSITION ON THE PHYSICAL PART, THEY MAY BE DIFFERENT THAN THE DRAWING INDICATES)
 -THE WEIGHT INDICATED IN THE TABLE IS AN APPROXIMATE VALUE AND MAY BE SUBJECT TO CHANGE
 -THE DRAWING IS ONLY FOR INFORMATIVE USE, SOME PHYSICAL FEATURES MAY CHANGE.

0	26/02/2026	CM	PC	LP	INITIAL REVISION
REV.	DATE	DRWN	APVD	APVD	DESCRIPTION



PREFORMED LINE PRODUCTS
 PLP.COM

CONFIDENTIAL
 The data and information contained in this document are proprietary to PLP (Preformed Line Products). Such data and information are provided solely for use with PLP's products and shall not be disclosed, duplicated, or otherwise used without the express written approval of PLP. PLP MAINTAINS THE RIGHT TO CHANGE DRAWING SPECIFICATIONS AT ANY TIME.
 PLEASE CONTACT PLP TO VERIFY CURRENT VERSION.

DESCRIPTION
 TERMINAL FOR JOINING STUD TO FLAT SURFACE
 DRN BY: CM APR BY: LP DATE: 26/02/2026 SCALE: NA PAGE 1 OF 1
 FILENAME: INFORMATION